

La Folia

Arcangelo Corelli (1653 - 1713)

Thema: Adagio (VI. 1 wie in der Suzuki-Violinschule)

9

f

9

p

17

1. Var. Allegretto

mf

25

p *cresc* *f*

33

2. Var. Allegro moderato

f

41

p

49

3. Var. Poco meno mosso

f

57

p *cresc.* *f*

65 4. Var.

67

69

71

73

75

77

79

81 5. Var. Andante

85

pizz. p

rit.

0

89 **6. Var. Allegro**

f

93

97 **7. Var.**

f

101

105 **8. Var. Adagio**

mp

109

accelerando

113 **9. Var. Allegro**

f

117

f

121

p

125

f

129 10. Var.

f simile

137

p *f*

145 11. Var.

mf *p*

150

mf *f* *p* *mp*

155

mf *f*

161 12. Var. ♩ = 86

mf ♩ = 86

164

167

f

170

173

p *rit.*

13. Var.

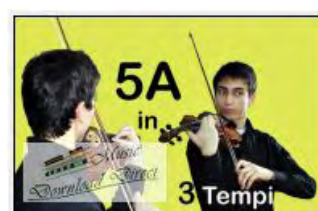
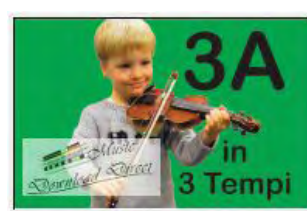
The image shows a musical score for the 13th variation of Corelli's 'La Folia'. It consists of ten staves of music, numbered 177 to 195. The key signature is one flat (B-flat), and the time signature is 3/4. The music is written in a treble clef. The first staff (177) begins with a forte (*f*) dynamic marking. The score features a variety of rhythmic patterns, including eighth and sixteenth notes, often beamed together. There are several instances of triplets, indicated by a '3' below the notes. The piece concludes with a fermata over a final note on the tenth staff (195).

www.musicdownloaddirect.de

Deutsches Suzuki Institut

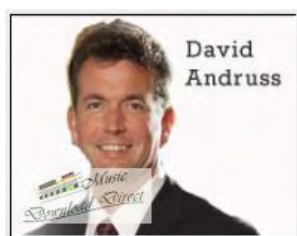
Kerstin Wartberg

Download Shop for Suzuki Teachers and Students



*Most of the pieces in Books 1-5 have been recorded
at slow and medium practice.*

tempos. http://downloadshop.germansuzuki.de/index.php?cat=c24_Play-along-in-3-Tempi.html



STEP by STEP

**New Piano Arrangements
by David Andruss**

EASY and ADVANCED VERSIONS



PRE-Twinkle Songs

Edited by Kerstin Wartberg

More than 20 Songs!



String Trios, Coll. 1 - 4

**2 violins & cello
VERY EASY**

Most of the pieces in Books 1-2

Very Easy String Trios / Sehr leichte Streichtrios

For 2 Violins & Cello by / Für 2 Violinen & Cello von
Kerstin Wartberg

Range of the Cello Part: Only 2-6 notes!

Umfang der Cellostimme: Nur 2-6 Töne!

For these pieces you need to play the following notes:
Für diese Stücke brauchst Du folgende Noten:



Song of the Wind /
Fuchslied

Lightly Row /
Hänschen klein

Violin I
Violin II
Cello

Musical score for two violin parts and a cello part. The key signature is one sharp (F#) and the time signature is 4/4. The first piece, 'Song of the Wind', consists of two measures. The second piece, 'Lightly Row', also consists of two measures. The cello part plays a simple bass line of four notes in each measure.

Go Tell Aunt Rhody /
Tante Rhody

Long, Long Ago /
Lang, lang ist's her

Mayson /
Alle Vögel sind schon da

VI. I
VI. II
Cello

Musical score for two violin parts and a cello part. The key signature is one sharp (F#) and the time signature is 4/4. The first piece, 'Go Tell Aunt Rhody', consists of two measures. The second piece, 'Long, Long Ago', consists of two measures. The third piece, 'Mayson', consists of two measures. The cello part plays a simple bass line of four notes in each measure.

Oh Come, Little Children /
Ihr Kinderlein kommet

Twinkle, Twinkle Little Star /
Leuchte, leuchte kleiner Stern

VI. I
VI. II
Cello

Musical score for two violin parts and a cello part. The key signature is one sharp (F#) and the time signature is 4/4. The first piece, 'Oh Come, Little Children', consists of two measures. The second piece, 'Twinkle, Twinkle Little Star', consists of two measures. The cello part plays a simple bass line of four notes in each measure.